



Bacon's College  
The best in everyone™  
Part of United Learning

# Year 9 Newsletter

Week 11 2024-2025

Courage

Compassion

Respect

Faith

Integrity

Bacon's College ensures that every student is well educated, cared for and exhorted to achieve the academic and personal excellence that will lead to university or skilled work and to a fulfilled life.

*'I came to give life, life in all its fullness'*

John 10:10

## A week in the life of Year 9

Dear Parents, Guardians and Students,

I hope you and your families are well.

The week began with the whole college assembly, focused on student wellbeing and the services students can access led by the Student Council Wellbeing team. Representatives Adam, Elisabeth and Lilly S informed students of wellbeing sessions held in the library this week and the new worry box. Students can use this box to express their concerns and speak to a member of the wellbeing team.

The sixth form mediation team then presented their service. Mediation is a service run by trained mediators to give students a safe space to discuss problems with peers in access advice. If your child would like to arrange mediation with a peer they can contact the team at mediation [baconsmediation@baconcollege.co.uk](mailto:baconsmediation@baconcollege.co.uk).

This half term is a pivotal time for our students, with mock exams beginning in December. Our priority is to ensure that each student feels well-prepared and supported to achieve their best in these upcoming assessments.

**English** - Years 7-9 will sit their assessments in class between the 16th of December and the 10th of January.

**Maths** - Years 7-9 will sit their exams in the Main Hall between the 13th-17th of January.

**All other exams will take place in lessons;** therefore, it is vital students aim to maintain 100% attendance not only to ensure they are to learn the content of the exams but also are in to take them. These assessments will give both the student and teachers a picture of how they well they will achieve at GCSE. To aid in their preparation, we encourage all students to engage with their teachers over the next few weeks. These conversations will be invaluable in understanding what areas they should focus on, which resources will be most beneficial, and how to structure their study time effectively. Our teachers are here to guide and support, so please don't hesitate to reach out if you have questions or need assistance in planning revision.

Thank you for your continued support,

Kind Regards,

Mrs Dickinson (nee Ley)

Head of Year 9

## Academic Excellence and Homework

Miss Lyons went round the Technology classes this week to see what projects the students are making:

*Painting with layers to create texture that mimics nature: - Janice, Olivia E and Idris*



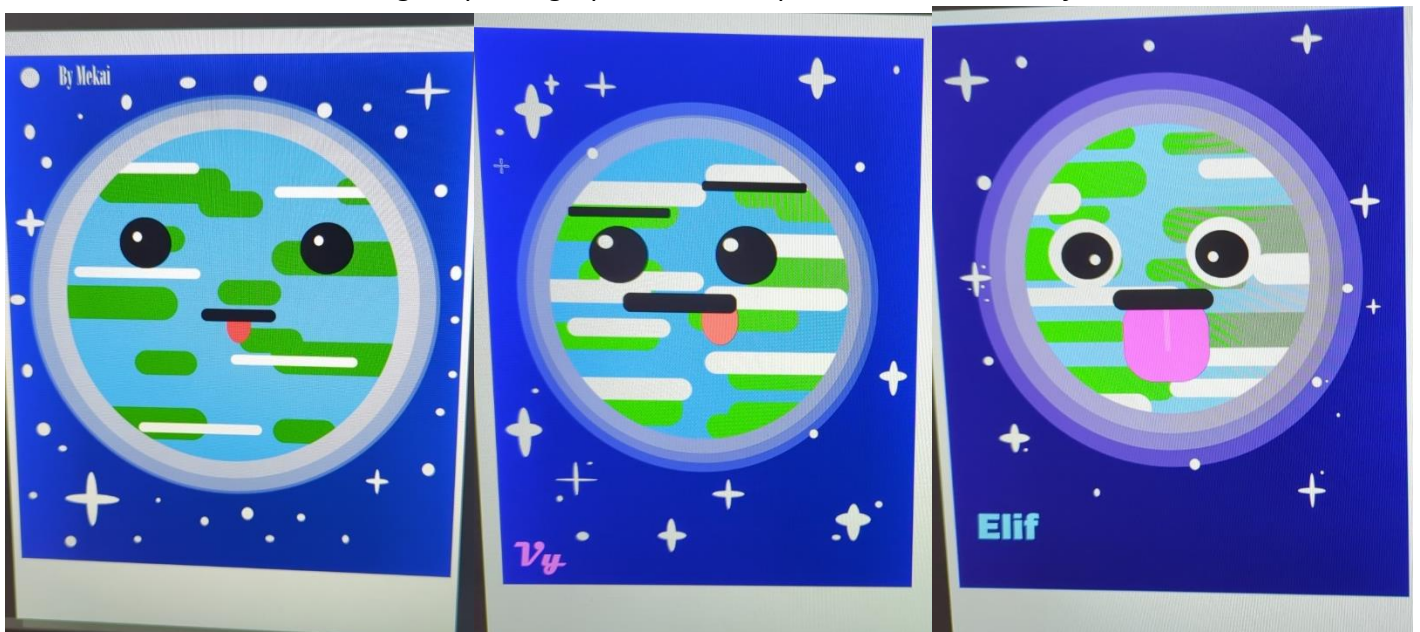
*Cornelius and Ruth-Ann book cover.*



*Lilly G and Aaliyah M tonal and fine liner sketches.*



Using shapes in graphics to make posters - Mekai, Vi, Elif



Creating bucket hats based on music - David P, Donisha, Nathan





Sparx reader:

Our Sparxiest reader goes to **Elisabeth.**

Well done to **9L** for the highest completion rate

Year 9

9L: 93%

9I: 89%

9C: 88%

9S: 86%

9A: 85%

9O: 79%

9N: 70%

Sparx Maths: Well done to **9A** for the top completion rate in the year group with 9N in a close second

Well done to the following for their excellent consistency with completing their homework and going above and beyond with target and XP boost.

**Thai, Sian, Isabella, Dania, Jessica and Eri**

- **Homework**

Homework is key to ensuring your child is revising regularly and stretching their learning further.

#### *Homework Club*

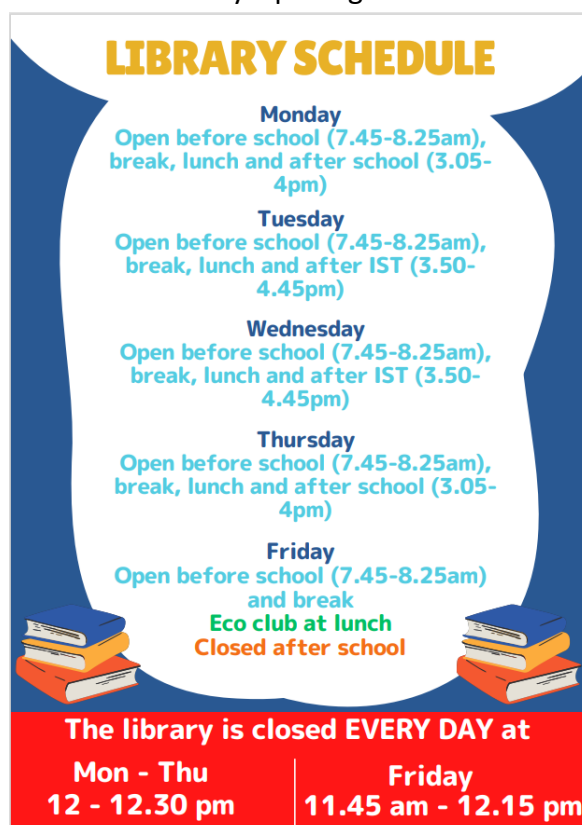
Homework Club is available to all students during the Library's opening hours listed below. We encourage students to attend Homework Club or speak with their teachers if they have any questions before their homework deadlines. Heads of Year will be monitoring students' homework completion rates. If a student receives 10 or more homework detentions within a half term, they will be expected to attend Compulsory Homework Club to ensure they receive the support needed to complete their assignments.

Thank you for your continued support in helping your child stay on top of their homework.

#### *Homework timetable for KS3:*

| Day that homework is set and due  | Subject and the learning platform you will use  | The approximate time the homework should take you              |
|---|---|--|
| Monday  | <b>English</b> – Seneca/Homework booklet**<br><b>Sparx Reader</b>   | 60 minutes<br>20 minutes                                       |
| Tuesday   | <b>RE</b> - Seneca<br><b>History</b> – Seneca**   | 30 minutes<br>30 minutes                                       |
| Wednesday   |   |  |
| Thursday  | <b>Science</b> – Sparx Science<br><b>Maths</b> – Sparx Maths  | 60 minutes<br>60 minutes                                       |
| Friday  | <b>MFL</b> – Active Learn/Languagenut/Seneca/Fluency booklet**<br><b>Geography</b> – Seneca/Knowledge Organiser | 30-60 minutes (+ 10 minute daily vocab revision)<br>30 minutes |
| <b>Technology - You will also receive one piece of Technology homework set on the day of your lesson which will be due for the next lesson.</b><br><b>**In addition to following this homework timetable, some of your other subjects will set additional homework. Please check SMHW for more details.</b> |   |  |

\* Library Opening Times



The poster is titled 'LIBRARY SCHEDULE' in bold yellow letters. It lists the opening times for each day of the week. Monday, Tuesday, Wednesday, and Thursday are open before school (7.45-8.25am), during break, lunch, and after school (3.05-4pm). Friday is open before school (7.45-8.25am) and during break, with an 'Eco club at lunch' and 'Closed after school'. At the bottom, a red banner states 'The library is closed EVERY DAY at' followed by 'Mon - Thu 12 - 12.30 pm' and 'Friday 11.45 am - 12.15 pm'. The poster is decorated with stacks of books at the bottom corners.

**LIBRARY SCHEDULE**

**Monday**  
Open before school (7.45-8.25am),  
break, lunch and after school (3.05-4pm)

**Tuesday**  
Open before school (7.45-8.25am),  
break, lunch and after IST (3.50-4.45pm)

**Wednesday**  
Open before school (7.45-8.25am),  
break, lunch and after IST (3.50-4.45pm)

**Thursday**  
Open before school (7.45-8.25am),  
break, lunch and after school (3.05-4pm)

**Friday**  
Open before school (7.45-8.25am)  
and break  
Eco club at lunch  
Closed after school

**The library is closed EVERY DAY at**

|  |   |
|--|---|
| <b>Mon - Thu</b><br><b>12 - 12.30 pm</b> | <b>Friday</b><br><b>11.45 am - 12.15 pm</b> |
|--|---|

**Shout Out**

**Year 9 boys football team** – progressing to the next stage in the cup, well done!

**Ella S** and **Melo** because they excelled in their programming tasks this week – **Mr Sagoe**

**Hannah M** for improved attitude and focus at school – **Ms Lyons**

**Nevaeh M** for improved behaviour – **Ms Dickinson**

**Alfie J** for improved attendance – **Mr Sargeant**

**Sydney H** for always being polite and kind in tutor – **Mr Ferrari**

**Joshua** for his attention to learning and developing his knowledge – **Mr Ferrari**

**Andi, Ipek, Tony** for their engagement in PSHE – **Ms Johnson**

**Kye A** for 100% attendance, always on time, leading by example in the mornings with great manners and positive attitude. - **Ms Fraser**

**Carly E** for seeking help and being kind to others – **Ms Fraser**

## Attendance



The graphic above highlights some key statistics linked to attendance. We know that students who are in school perform better and learn more. Please support us as we aim for the best possible attendance for every single student at Bacon's College. Absence across the year group is currently 7.41% so please push to get student in on time so their learning is maximised.

### Year 9 – 92.59%

|    |       |
|----|-------|
| 9S | 95.4% |
| 9C | 95.3% |
| 9A | 94.7% |
| 9I | 93.4% |
| 9L | 92.6% |
| 9O | 91.2% |
| 9N | 81.1% |

**WELL DONE**



**for having the best attendance as a tutor group this week!**

**Students with 100% attendance THIS WEEK:**

|         |             |          |          |          |            |           |
|---------|-------------|----------|----------|----------|------------|-----------|
| Ibrahim | Idris       | Manny    | Dmitriy  | Sian     | Jessica    | Chantelle |
| Reggie  | Donisha     | Winny    | Sami     | Ellie    | Rahmatulai | Janice    |
| Jayan   | Ruth-Ann    | Asare    | Isaiah   | Melo     | Jack       | Malika    |
| Anas    | Eliza       | Noortje  | Maniche  | Courtney | Benjamin   | Phoenix   |
| Dominic | Thomas      | Eri      | Mohamed  | William  | Elisabeth  | Emma      |
| Oliver  | Cornelius   | Isabella | Benjamin | Peter    | Daniella   | Kye       |
| Lilly   | Olorunjuwon | Thai     | Jaden    | Elaine   | Hannah     | Kaitlin   |
| Adam    | Tony        | Kelvin   | Jonathan | Nicole   | Demilade   | Henry     |
| Rhys    |             |          |          |          |            |           |

**Pupil Charter**

The start of the new academic year sees the launch of the Bacon's Pupil Charter for all year groups. Having been designed with student and staff input, the Charter sets out a core offer of opportunities for Bacon's students throughout their school career. The Charter focusses on developing the personal excellence of our students through opportunities that take place outside of the classroom and works in partnership with an ambitious enrichment offer. The Charter is linked to our well-established rewards system and students will achieve positive points for meeting Charter points. A full link to the Charter can be found on the College website [here](#) and an updated offer of enrichment and extra-curricular opportunities will soon also be available to view [here](#). The points for the Year 9 Charter are set out below.



## Bacon's Pupil Charter 7

Courage • Respect • Compassion • Faith • Integrity

**Pre-Year Project** ☐ +10pts Complete Summer Project 'Your Journey So Far'

| Term 1  | Term 2  | Term 3  |
|---|---|---|
| <input type="checkbox"/> +5pts Attend Welcome/Carol Service | <input type="checkbox"/> +5pts Attend Parents Evening                 | <input type="checkbox"/> +5pts Represent the College      |
| <input type="checkbox"/> +5pts Attend Tutor Consultation    | <input type="checkbox"/> +5pts Share my views with the School Council | <input type="checkbox"/> +5pts Volunteer in the community |
| <input type="checkbox"/> +5pts Bond on a trip away          | <input type="checkbox"/> +5pts Participate in a club                  | <input type="checkbox"/> +5pts Celebrate Culture Day      |
| ★ +5pts Term 1 Completion Bonus                             | ★ +5pts Term 2 Completion Bonus                                       | ★ +5pts Term 3 Completion Bonus                           |

**Ongoing** ☐ +5pts All 1s for attitudinal grades  
☐ +5pts Meet all homework deadlines

Completed Charter +20 pts

100% Completed Bacon's Best Card +20 pts

Person with cane

Person walking

Person on wheelchair

## Bacon's Pupil Charter 8

Courage • Respect • Compassion • Faith • Integrity

**Pre-Year Project** ☐ +10pts Complete Summer Project 'Personal Reflection'

| Term 1  | Term 2  | Term 3  |
|---|---|---|
| <input type="checkbox"/> +5pts Participate in a club                  | <input type="checkbox"/> +5pts Reflect on goals with an adult     | <input type="checkbox"/> +5pts Volunteer in the community |
| <input type="checkbox"/> +5pts Share my views with the School Council | <input type="checkbox"/> +5pts Represent the College              | <input type="checkbox"/> +5pts Celebrate Culture Day      |
| <input type="checkbox"/> +5pts Perform in a class event               | <input type="checkbox"/> +5pts Visit a museum, gallery or theatre | <input type="checkbox"/> +5pts Attend Parents Evening     |
| ★ +5pts Term 1 Completion Bonus                                       | ★ +5pts Term 2 Completion Bonus                                   | ★ +5pts Term 3 Completion Bonus                           |

**Ongoing** ☐ +5pts All 1s for attitudinal grades  
☐ +5pts Meet all homework deadlines

Completed Charter +20 pts

100% Completed Bacon's Best Card +20 pts

Person with cane

Person walking

Person on wheelchair

## Bacon's Pupil Charter 9

Courage • Respect • Compassion • Faith • Integrity

**Pre-Year Project** ☐ +10pts Complete Summer Project 'Option Choices'

| Term 1  | Term 2  | Term 3  |
|---|---|---|
| <input type="checkbox"/> +5pts Participate in a club                  | <input type="checkbox"/> +5pts Hear from a speaker                          | <input type="checkbox"/> +5pts Represent the College      |
| <input type="checkbox"/> +5pts Share my views with the School Council | <input type="checkbox"/> +5pts Visit a University and explore career routes | <input type="checkbox"/> +5pts Celebrate Culture Day      |
| <input type="checkbox"/> +5pts Reflect on goals with an adult         | <input type="checkbox"/> +5pts Attend Parents Evening                       | <input type="checkbox"/> +5pts Volunteer in the community |
| ★ +5pts Term 1 Completion Bonus                                       | ★ +5pts Term 2 Completion Bonus   | ★ +5pts Term 3 Completion Bonus                           |

**Ongoing** ☐ +5pts All 1s for attitudinal grades  
☐ +5pts Meet all homework deadlines

Completed Charter +20 pts

100% Completed Bacon's Best Card +20 pts

Person with cane

Person walking

Person on wheelchair

### Forthcoming events

Bacon's College Annual Advent Appeal - December

- **Christmas Markets- 9<sup>th</sup>-13<sup>th</sup> of December**

All year groups will have a market day in the Main Hall (break and lunch).

Tutors will provide information to tutors regarding fundraising activities.

- **Staff CPD – Tuesday 3<sup>rd</sup> December**

- **Mufti-Day – Friday 13<sup>th</sup> December**

- **Year 7 – 10 Mid Year Exams - 16<sup>th</sup> December 2024 – 17<sup>th</sup> January 2025**